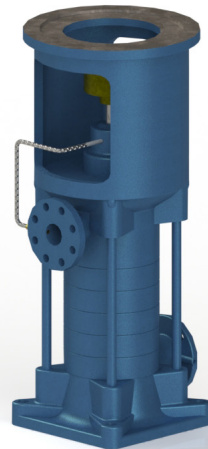


MULTI-STAGE/MULTI-OUTLET RKBV



FOR WHERE IT REALLY MATTERS

SyncroFlo, Inc. is a leading manufacturer of centrifugal pumps and pre-engineered packaged systems.

SyncroFlo is an industry leading manufacturer of pumps and packaged systems with over 50 years of experience in the pumping industry. In 1962, SyncroFlo was the first company to pre-package domestic water pumping systems for the plumbing industry. Since pioneering the domestic water booster industry, SyncroFlo has maintained the quality and integrity that serve as the foundation for consistently over-delivering to customers.

PROVEN QUALITY

Most pumping applications are invariably demanding – typically operating in hostile, arduous or extreme temperature environments where design, integrity and quality matter. Using the most advanced computer

technology in the world, SyncroFlo designs, assembles, tests and ships all pump sets in Norcross, Ga., in an ISO 9001-2008 certified facility.

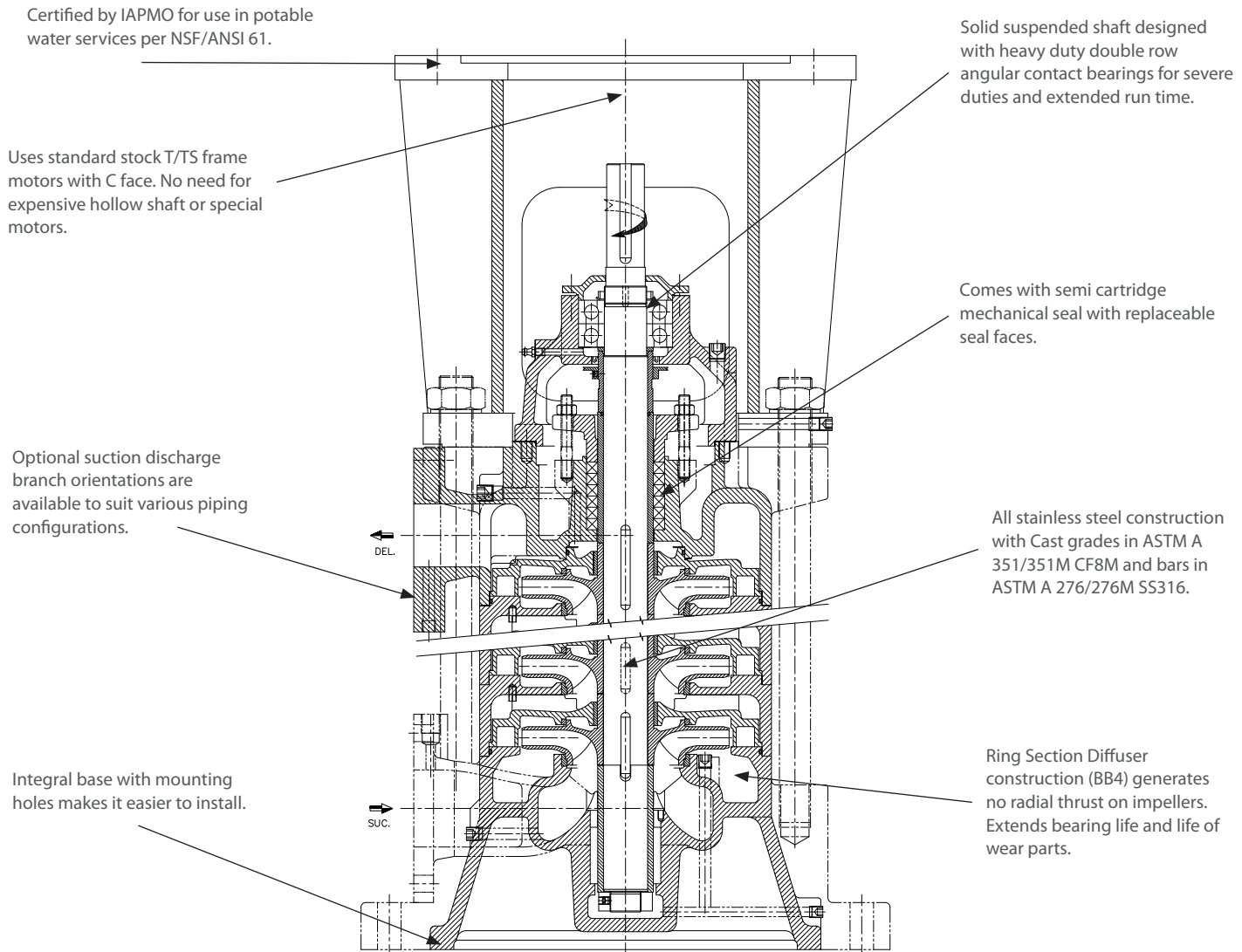
WATER PUMPING

Often operating 24 hours a day, 365 days a year, water pumping applications are highly energy intensive. In fact, pump capital purchases typically only represent 5% of total cost of ownership. With a complete line of general water pumps, or the highly efficient LOWEST LIFECYCLE COST (LLC) pumps, SyncroFlo has the pump that's best suited for your application. Customers can enjoy operating savings up to 5% per machine, per year, depending on the pump that's selected.

TYPICAL APPLICATIONS:

- Air Conditioning
- Sprinkler Systems
- Fire Fighting
- Booster Service

MULTI-STAGE/MULTI-OUTLET - RKBV



CONFIGURATION

Consists of a number of Ring Section Diffuser casings, bolted suction and delivery casing

DISCHARGE & PERFORMANCE

- CD Delivery 4 in to 5 in
- CD Outputs up to 2200 gpm
- CD Heads up to 870 psi (Fire applications)
- RKB Delivery 1.25 in to 1 in
- RKB Outputs up to 3742 gpm
- RKB Heads up to 2788 ft

FEATURES

- CD for fire applications
- RKB for industrial applications
- Mechanical seal or gland packed
- Suction flange oriented left or right
- Vertical mounting
- Low NPSH
- Available as a canned or Vertical Turbine type arrangements
- Approved to LPCB, FM and/or UL standards, all of which are compliant to NFPA 20